



Hatherley Crescent
Sidcup
DA14 4HX

Leasehold

We are pleased to offer to the market, what we feel is an ideal first time buy or buy to let investment opportunity. This one bedroom apartment is located in a prime location with Sidcup station and its variety of shops and restaurants just a short walk away.

The property briefly comprises: Secure communal entrance, private entrance door, entrance hall, lounge which provides access to a small balcony, kitchen, double bedroom and bathroom.

Externally there is parking and a garage en bloc.

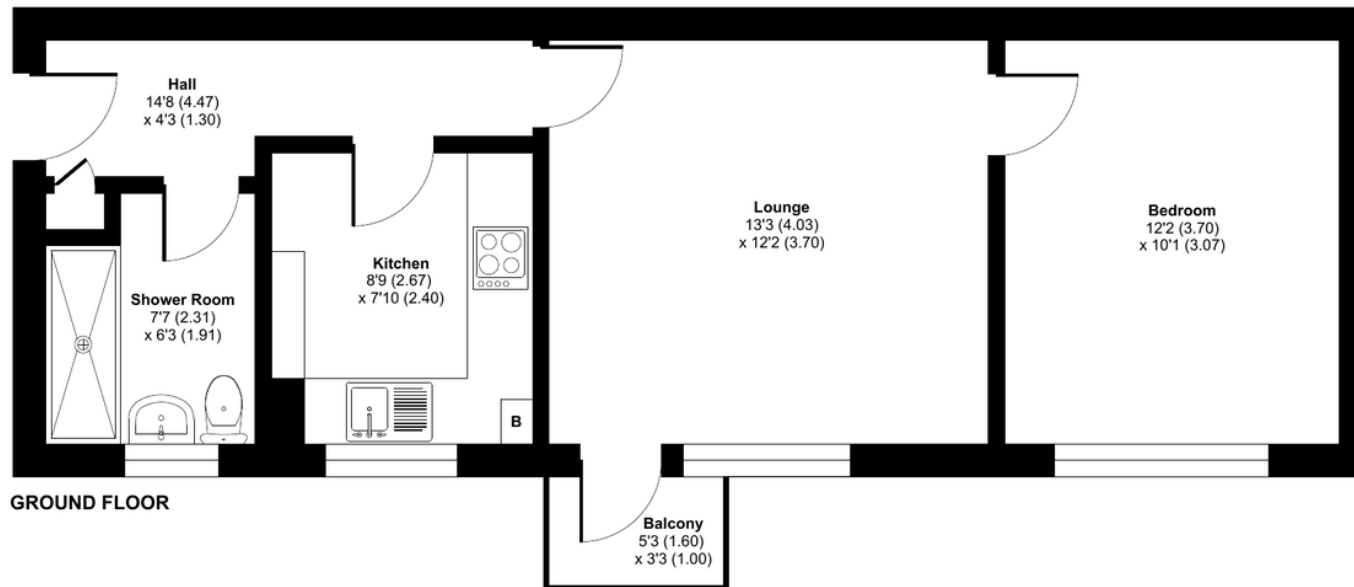
We feel this property is a great first time purchase or buy to let investment especially with its fantastic location and being offered to the market "chain free".

Local Authority Bexley London Borough
Council
Council Tax Band B
EPC Rating C

Lease 104 years remaining
Service Charge £1,280 per annum
Ground Rent £400 per annum

Hatherley Crescent, Sidcup, DA14

Approximate Area = 473 sq ft / 43.9 sq m
For identification only - Not to scale



Drewery Property Consultants
128 Station Road
Sidcup
Kent
DA15 7AF

Contact
020 8269 6605
info@drewery.co.uk
www.drewery.co.uk

Agents Note: Whilst every care has been taken to prepare these particulars, they are for guidance purposes only. All measurements are approximate and are for general guidance purposes only and whilst every care has been taken to ensure their accuracy, they should not be relied upon and potential buyers/tenants are advised to recheck the measurements.

