



Maple Court
Durham Road
Sidcup
DA14 6LP
Leasehold

Offered to the market is this beautifully presented, spacious 2 bedroom ground floor apartment. It comes with its own private garden accessed off the lounge and private parking. Located only a short walk from the local high street, parks and transport links.

The apartment briefly comprises of: a secure communal entrance, entrance door, entrance hall, a large open plan living area that has been presented to a high standard, a brand new kitchen open plan to the lounge with breakfast bar all overlooking and giving access to its own private garden. There is an amazing brand new bathroom and 2 good sized bedrooms all making this a property that you could simply move straight into with no work needing doing.

Externally there is the private garden, allocated parking and communal grounds.



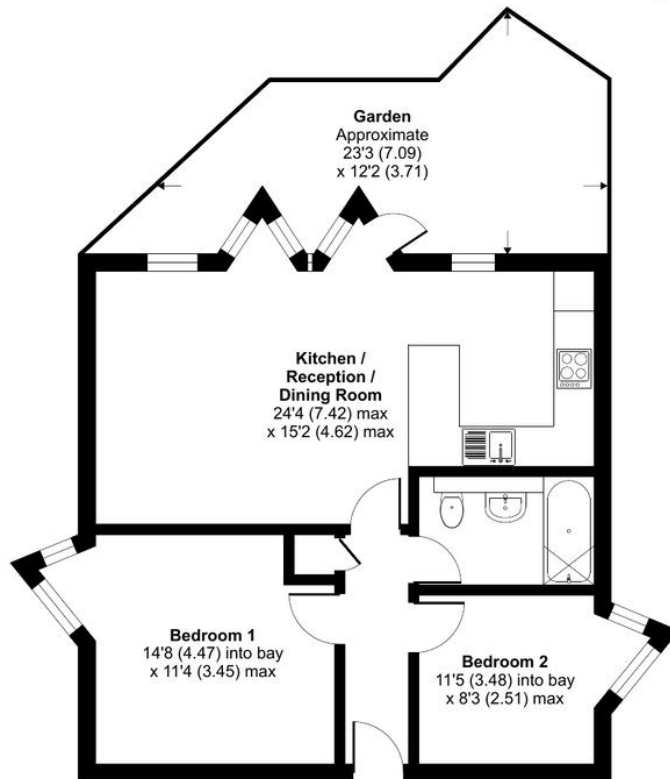
Local Authority Bexley London Borough
Council
Council Tax Band C
EPC Rating D

Lease 98 years remaining (original lease was 125
years from June 1998)
Service Charge £2000 per annum
Ground Rent £200 per annum

Durham Road, Sidcup, DA14

Approximate Area = 623 sq ft / 57.9 sq m

For identification only - Not to scale



GROUND FLOOR



Floor plan produced in accordance with RICS Property Measurement Standards incorporating International Property Measurement Standards (IPMS2 Residential). © nitchecom 2024. Produced for Drewery. REF: 1116372

Drewery Property Consultants
128 Station Road
Sidcup
Kent
DA15 7AF

Contact
020 8269 6605
info@drewery.co.uk
www.drewery.co.uk

Agents Note: Whilst every care has been taken to prepare these particulars, they are for guidance purposes only. All measurements are approximate and are for general guidance purposes only and whilst every care has been taken to ensure their accuracy, they should not be relied upon and potential buyers/tenants are advised to recheck the measurements.