



Maple Leaf Drive

Sidcup
DA15 8WA

Freehold

Spacious four bedroom detached house
Highly desirable "Hollies" development
Short walk to Sidcup station and local shops
and restaurants
Convenient for sought after schools
Exclusive residents only leisure facility
Off street parking and garage
Chain Free



FULL DESCRIPTION

Offered for sale is this four-bedroom detached home, set within the highly sought-after Hollies development. The Hollies is particularly desirable for its attractive parkland setting and exclusive on-site residents' leisure facilities, including a swimming pool, gym, tennis courts, and snooker room, all positioned in a prime location.

Sidcup train station, along with a variety of shops, restaurants, and some of the borough's most popular schools, are all within easy walking distance.

The property briefly comprises an entrance hall, lounge, dining room, kitchen, and ground floor W.C. To the first floor are four bedrooms, with the principal bedroom benefiting from an en-suite, as well as a family bathroom.

Externally, the home offers off-street parking, a garage, and both front and rear gardens.

This is a fantastic opportunity to acquire a detached home within the Hollies development, offered to the market chain free.

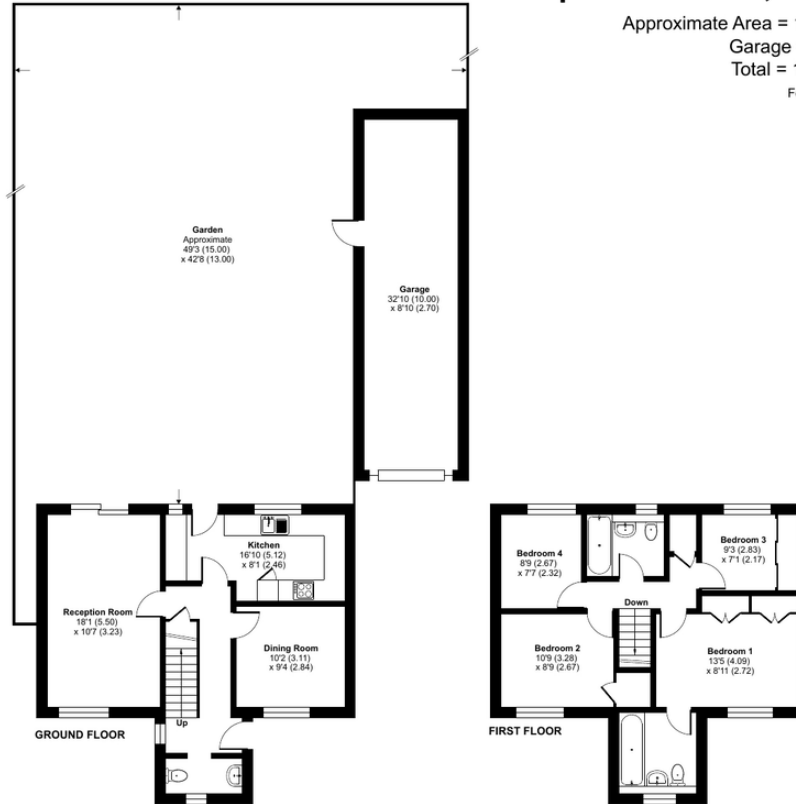
Directions

From our Sidcup office turn right and proceed along Station Road, take the third turning on the right hand side into Willersley Avenue, first right into Maple Leaf Drive. Closest Stations: Sidcup (0.46 mi) New Eltham (1.07 mi) Albany Park (1.29 mi) Closest Schools: Burnt Oak Junior School (0.23 mi) Holy Trinity Lamorbey Church of England School (0.33 mi) Chislehurst and Sidcup Grammar School (0.56 mi)



Local Authority
Council Tax Band
EPC Rating

Bexley London Borough Council
G
D



Maple Leaf Drive, Sidcup, DA15

Approximate Area = 1122 sq ft / 104.2 sq m
Garage = 281 sq ft / 26.1 sq m
Total = 1403 sq ft / 130.3 sq m
For identification only - Not to scale



Floor plan produced in accordance with RICS Property Measurement Standards incorporating International Property Measurement Standards (IPMS2 Residential). © ritchecom 2026. Produced for Drewery. REF: 1420619

Drewery Property Consultants
128 Station Road
Sidcup
Kent
DA15 7AF

Contact
020 8269 6605
info@drewery.co.uk
www.drewery.co.uk

Agents Note: Whilst every care has been taken to prepare these particulars, they are for guidance purposes only. All measurements are approximate and are for general guidance purposes only and whilst every care has been taken to ensure their accuracy, they should not be relied upon and potential buyers/tenants are advised to recheck the measurements.