



Alderwood Road

Eltham
London
SE9 2LQ

Freehold

3 bedroom terrace house
Chain Free
Front garden with potential for off street parking
Easy access to local shops, parks, schools and transport links
Downstairs wc & upstairs bathroom
Rear garden





FULL DESCRIPTION

Offered for sale is this well presented 3 bedroom terrace. The property sits in a location that offers easy access to local shops, parks, schools and transport links and is offered to the market chain free.

The property briefly comprises: Entrance hall, a well presented front lounge, a good sized rear kitchen with room for a dining table, utility room and downstairs w.c. On the first floor are 3 good sized bedrooms and a family bathroom.

Externally there is a good sized west facing rear garden along with a front garden that offers potential for off street parking. *CHAIN FREE*



Directions

From our Sidcup office turn right. At the traffic lights proceed straight across into Halfway Street. At the mini roundabout proceed straight across. Continue all the way to the next roundabout and take the third turning into Restons Crescent, then second left into Alderwood Road. Closest Stations: New Eltham (0.86 mi) Falconwood (0.88 mi) Sidcup (1.21 mi) Closest Schools: Alderwood Primary School (0.08 mi) Our Lady of the Rosary Catholic Primary School (0.32 mi) Stationers' Crown Woods Academy (0.47 mi)



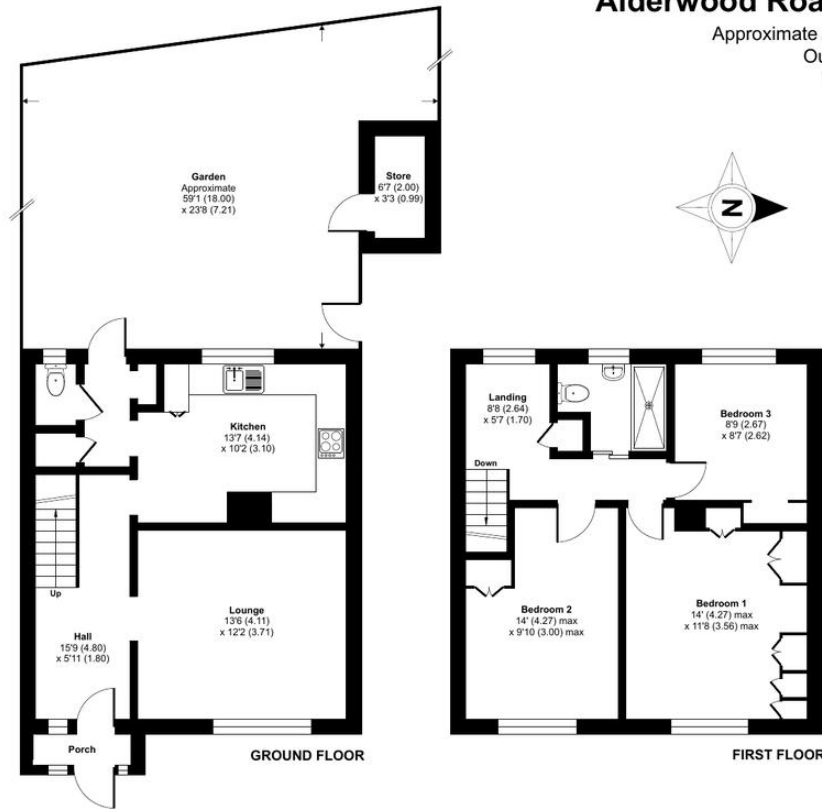
Local Authority
Council Tax Band
EPC Rating

Greenwich London Borough Council

D
C

Alderwood Road, London, SE9

Approximate Area = 975 sq ft / 90.6 sq m
Outbuilding = 22 sq ft / 2 sq m
Total = 997 sq ft / 92.6 sq m
For identification only - Not to scale



Floor plan produced in accordance with RICS Property Measurement Standards incorporating International Property Measurement Standards (IPMS2 Residential). © rnhcecom 2026. Produced for Drewery. REF: 1463344

Drewery Property Consultants
128 Station Road
Sidcup
Kent
DA15 7AF

Contact
020 8269 6605
info@drewery.co.uk
www.drewery.co.uk

Agents Note: Whilst every care has been taken to prepare these particulars, they are for guidance purposes only. All measurements are approximate and are for general guidance purposes only and whilst every care has been taken to ensure their accuracy, they should not be relied upon and potential buyers/tenants are advised to recheck the measurements.