



**Princes Road**

Hextable  
BR8 7RU

**Freehold**

Two bedroom terraced house  
Beautifully presented and ready to move into  
Newly fitted bathroom  
Quiet road with easy access to shops, schools  
and transport links  
Chain Free  
Front and rear gardens





## FULL DESCRIPTION

A fantastic opportunity for first-time buyers or those looking to downsize. This charming two-bedroom home has been beautifully presented throughout and benefits from a brand-new bathroom, offering a condition ready for someone to move straight into.

Situated in a quiet road set back from Top Dartford Road, the property enjoys easy access to local shops, schools, and transport links.

The accommodation briefly comprises an entrance door leading into the lounge, a well-presented kitchen, and a newly fitted bathroom to the ground floor. To the first floor are two generous double bedrooms.

Externally, the property offers a paved front garden and a lawned rear garden with a patio seating area.

An early viewing is highly recommended to avoid missing out on this excellent opportunity. Offered chain free.





**Local Authority**  
**Council Tax Band**  
**EPC Rating**

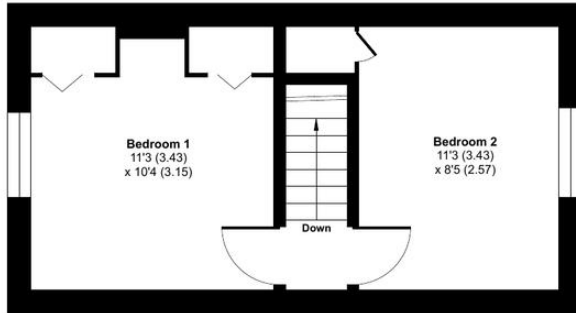
Sevenoaks District Council

B  
C

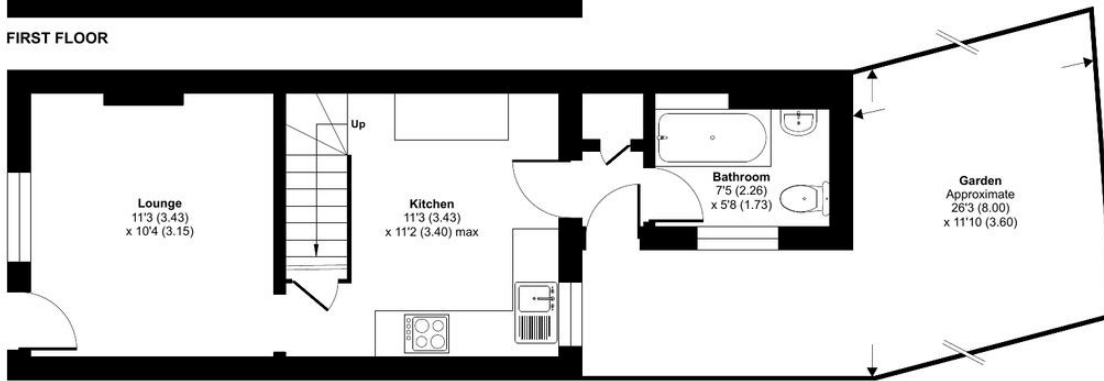
### Princes Road, Hextable, Swanley, BR8

Approximate Area = 571 sq ft / 53 sq m

For identification only - Not to scale



FIRST FLOOR



GROUND FLOOR



 Floor plan produced in accordance with RICS Property Measurement Standards incorporating International Property Measurement Standards (IPMS2 Residential). © rnhcom 2026. Produced for Drewery. REF: 1456593

**Drewery Property Consultants**  
128 Station Road  
Sidcup  
Kent  
DA15 7AF

**Contact**  
020 8269 6605  
info@drewery.co.uk  
www.drewery.co.uk

**Agents Note:** Whilst every care has been taken to prepare these particulars, they are for guidance purposes only. All measurements are approximate and are for general guidance purposes only and whilst every care has been taken to ensure their accuracy, they should not be relied upon and potential buyers/tenants are advised to recheck the measurements.