



**Darlinghurst Court**  
**Chatswood Mews**  
Sidcup  
DA14 6FB  
**Leasehold**

Offered for sale is this spacious, well-maintained two-bedroom apartment set within a modern development. The property benefits from a generous rear-facing balcony with pleasant views over the playing fields, along with a secure communal entrance and lift access.

The accommodation comprises an entrance hall, a large open-plan living area with a contemporary fitted kitchen and integrated appliances, and direct access to the balcony—ideal for relaxing or entertaining. There are two well-proportioned bedrooms, including a master with en-suite shower room, plus a modern family bathroom.

Further benefits include allocated parking and an excellent location close to local shops, parks, schools, and transport links. Offered chain free, early viewing is highly recommended.

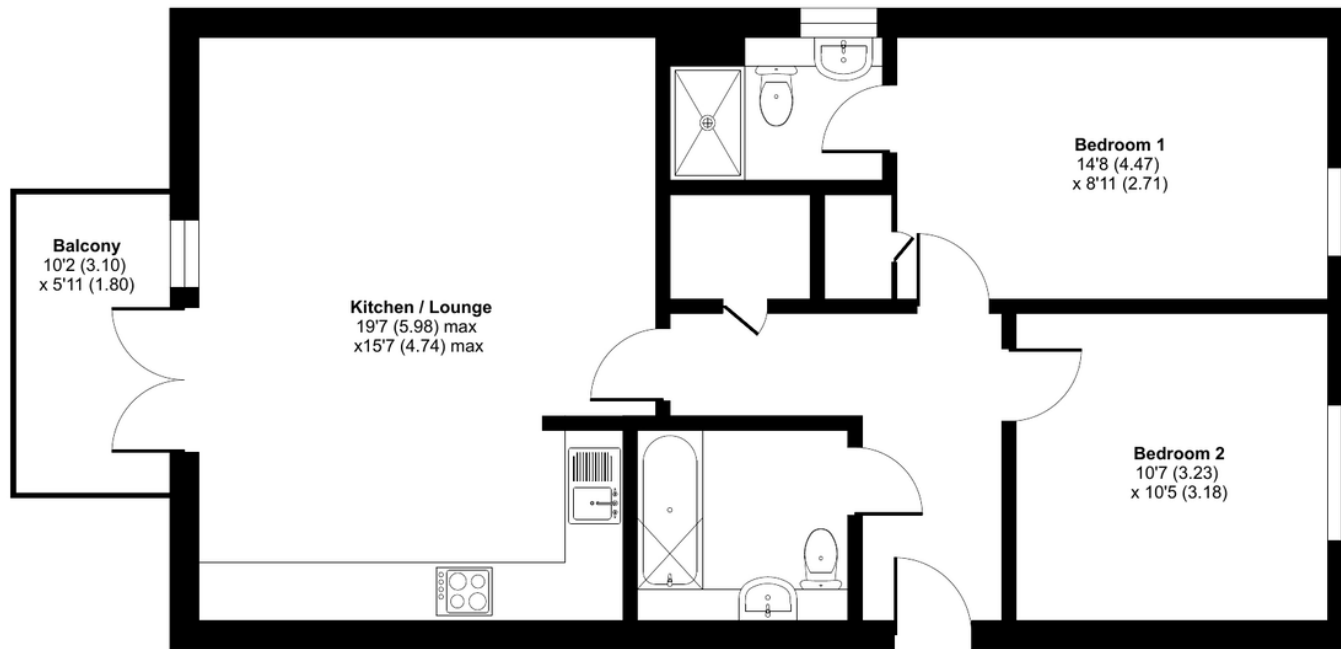


**Local Authority** Bexley London Borough  
Council  
**Council Tax Band** D  
**EPC Rating** B

**Lease** 114 years remaining – (125 years from  
24/6/2014)  
**Service Charge** £2,856 per annum  
**Ground Rent** £350 per annum

## Chatswood Mews, Sidcup, DA14

Approximate Area = 761 sq ft / 70.6 sq m  
For identification only - Not to scale



FIRST FLOOR

**Drewery Property Consultants**  
128 Station Road  
Sidcup  
Kent  
DA15 7AF

**Contact**  
020 8269 6605  
info@drewery.co.uk  
www.drewery.co.uk

**Agents Note:** Whilst every care has been taken to prepare these particulars, they are for guidance purposes only. All measurements are approximate and are for general guidance purposes only and whilst every care has been taken to ensure their accuracy, they should not be relied upon and potential buyers/tenants are advised to recheck the measurements.

