

£1,550 pcm

Hillsley Court, Elm Road, Sidcup, Kent, DA14 6AB



- **SPACIOUS & WELL MAINTAINED 2 BEDROOM 1ST FLOOR FLAT**
- **GAS CENTRAL HEATING, DOUBLE GLAZING, BALCONY & NEUTRAL DECOR**
- **SPACIOUS LOUNGE WITH DOOR TO BALCONY**
- **MODERN KITCHEN WITH A RANGE OF WALL & BASE UNITS**
- **2 X DOUBLE SIZE BEDROOMS WITH FITTED WARDROBES**
- **BATHROOM WITH OVERBATH SHOWER**
- **COMMUNAL GARDENS & GARAGE EN BLOC TO REAR**
- **AVAILABLE IMMEDIATELY**

To view all our homes: www.drewery.co.uk





SPACIOUS & WELL MAINTAINED 2 BEDROOM 1ST FLOOR FLAT: UNFURNISHED

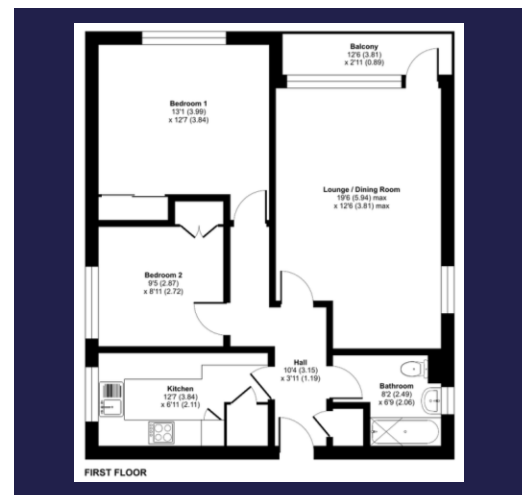
A spacious and well presented 2 bedroom first floor flat. Situated in a popular residential location and close to all local amenities including: shops, high street, schools, motorway links, bus routes and within easy access of Sidcup mainline railway station.

The property benefits from gas central heating, double glazing, balcony, entry phone and a neutral décor throughout.

The accommodation comprises: Entrance hall way with wood laminate flooring and storage cupboard. Spacious lounge with door to balcony overlooking rear gardens. Modern kitchen with a range of wall and base units, work surfaces, stainless steel sink, oven, hob, integrated fridge / freezer and plumbing space for washing machine and dishwasher. 2 x double size bedrooms which both benefit from built in wardrobes. Bathroom with hand basin, bath with overbath shower and W.C. Externally there are communal gardens and a garage en bloc to the rear.

Available immediately.

Restriction: no smokers, sharers or students.



Energy Efficiency Rating C.
(74/79) EIR 0/0

If you would like to view please contact Drewery Property Consultants on 020 8269 6600

These particulars are intended to give a fair description of the property but their accuracy cannot be guaranteed. Intending tenants should not rely on them as statements of representation of fact, but must satisfy themselves by inspection or otherwise as to their accuracy. All measurements quoted are approximate. None of the appliances/services have been tested by ourselves.

*Important - Admin fees apply per applicant. Please visit our website www.drewery.co.uk (information for tenants - Fees & other costs) or contact our staff.