

**Aspen Close**

Swanley
BR8 7UB

Freehold

Spacious 4 bedroom terraced house
Recently refurbished
Convenient for local parks, shops, schools and transport links
Kitchen flowing nicely into dining room
Front and rear gardens
On street parking
Chain Free





FULL DESCRIPTION

This chain free, deceptively spacious four-bedroom home has been recently refurbished and presented to an excellent standard. Ideally positioned, the property enjoys convenient access to local parks, shops, schools, and well-connected transport links.

The accommodation briefly comprises: an inviting entrance hall, downstairs W.C., study, and a generous lounge. The modern kitchen flows seamlessly into the dining room, creating the feel of an open-plan kitchen diner - perfect for both everyday living and entertaining.

To the first floor are four well-proportioned bedrooms and a contemporary family bathroom.

Externally, the property benefits from both front and rear gardens, along with on-street parking.

Offering exceptional space for the price in this sought-after location, this is a fantastic opportunity for buyers seeking a spacious home finished to a high standard. CHAIN FREE.





Local Authority
Council Tax Band
EPC Rating

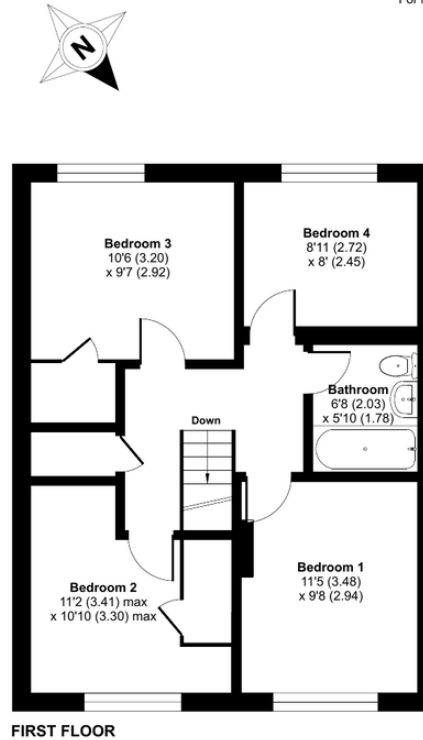
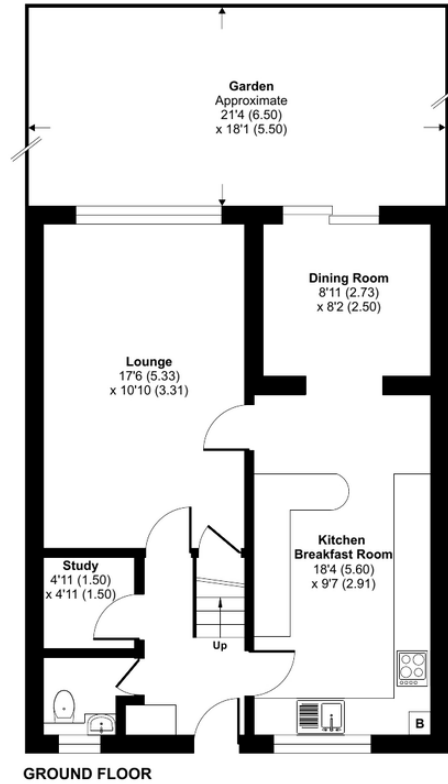
Sevenoaks District Council

C
C

Aspen Close, Swanley, BR8

Approximate Area = 1152 sq ft / 107 sq m

For identification only - Not to scale



Floor plan produced in accordance with RICS Property Measurement Standards incorporating International Property Measurement Standards (IPMS2 Residential). © ritchecom 2026.
Produced for Drewery. REF: 1408683

Drewery Property Consultants
128 Station Road
Sidcup
Kent
DA15 7AF

Contact
020 8269 6605
info@drewery.co.uk
www.drewery.co.uk

Agents Note: Whilst every care has been taken to prepare these particulars, they are for guidance purposes only. All measurements are approximate and are for general guidance purposes only and whilst every care has been taken to ensure their accuracy, they should not be relied upon and potential buyers/tenants are advised to recheck the measurements.