

Rostrevor Road, SW6

Guide Price: £1,100,000 , Share of To be advised





Guide Price: £1,100,000

999 Year Lease

Service Charge: £5,501.27 per annum

Ref PCL260025

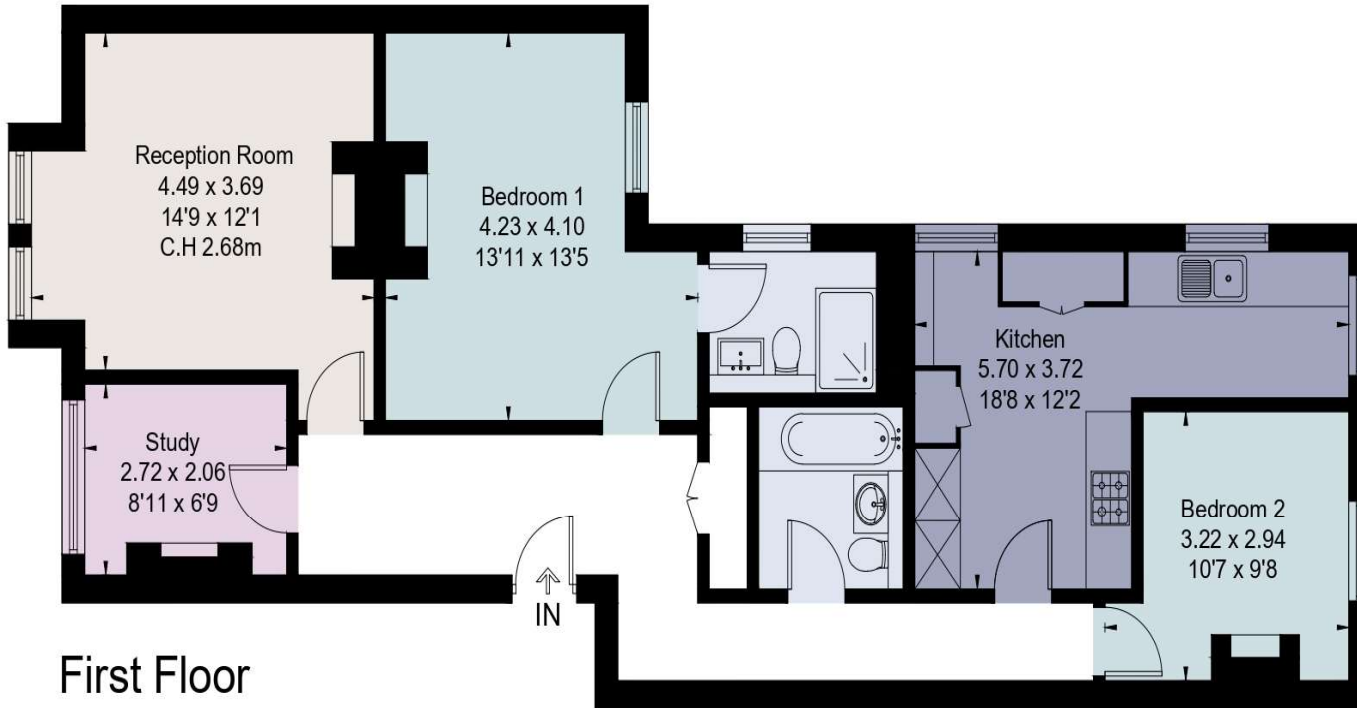
Rostrevor Road, SW6

Beautifully presented modern flat situated in a prime location, offering a luxurious and comfortable lifestyle. This spacious property boasts two well-appointed bedrooms ideal for families or professionals seeking a contemporary living space as well as a study.

The interior is bright and stylish, with a sleek design and high-quality finishes throughout. Residents will enjoy access to a communal garden, perfect for relaxing or entertaining guests. The property is conveniently located close to local amenities, transport links, and schools, making it a desirable choice for those looking for convenience and comfort.

Don't miss the opportunity to make this modern flat your new home and experience the best of urban living in a vibrant and sought-after neighbourhood.

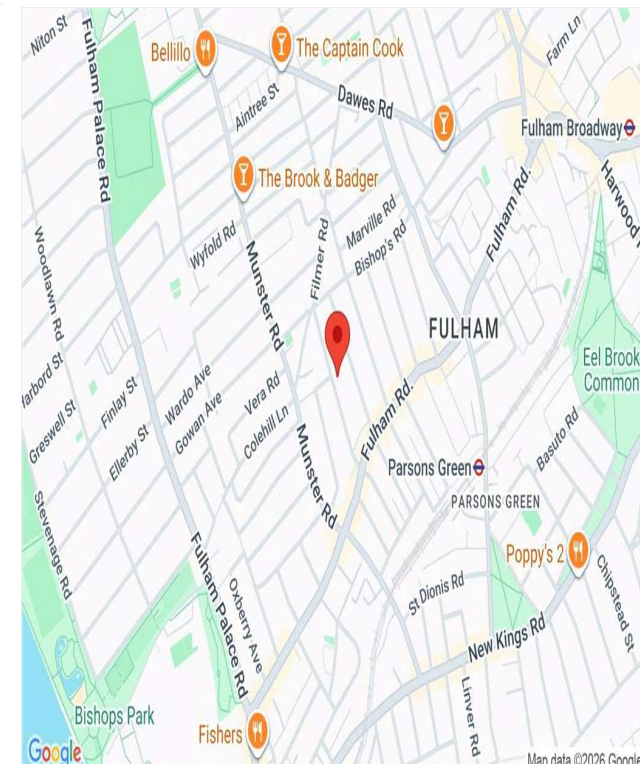
Approximate Floor Area = 88.4 sq m / 951 sq ft



First Floor



This floor plan has been drawn in accordance with RICS Property Measurement 2nd edition.
All measurements, including the floor area, are approximate and for illustrative purposes only. @fourwalls-group.com #108988



Score	Energy rating	Current	Potential
92+	A		
81-91	B		
69-80	C	77 C	83 B
55-68	D		
39-54	E		
21-38	F		
1-20	G		

For clarification, we wish to inform prospective purchasers that we have prepared these sales particulars as a general guide. We have not carried out a detailed survey, nor tested the services, appliances and specific fittings. Room sizes are approximate and rounded: they are taken between internal wall surfaces and therefore include cupboards/shelves, etc. Accordingly, they should not be relied upon for carpets and furnishings. Formal notice is also given that all fixtures and fittings, carpeting, curtains/blinds and kitchen equipment, whether fitted or not, are deemed removable by the vendor unless specifically itemised within these particulars.

