



Southwick Street, W2
£595.00 per week, Furnished, Available 15/06/2025

Anderson//Rose





£595.00 per week

**Furnished and available 15th
June 2026**

Ref PCL220144

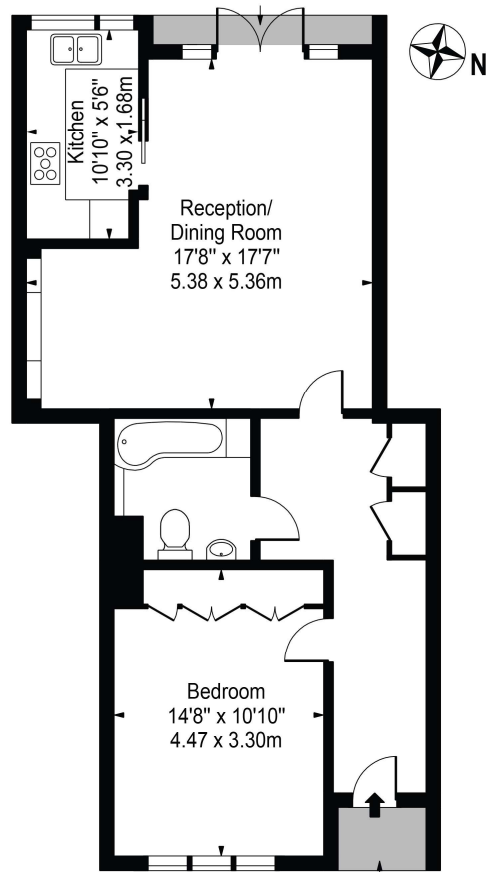
Southwick Street, W2

This is a fantastic opportunity to rent a stunning one-bedroom apartment set on the ground floor of a highly regarded secure mansions block in an outstanding location.

The property has recently been refurbished to an impressive standard and boasts excellent ceiling volumes throughout. Comprising of a large and bright reception and dining room with French doors leading onto patio and the award-winning communal gardens of the development, a separate kitchen with modern appliances, a spacious bedroom with plenty of wardrobe space and a family bathroom. The flat further benefits from a generous storage cupboard in the hallway and buildings 24-hour concierge service.

The property is part of Devonport which is a luxury mansion block on the corner of Southwick Street & Sussex Gardens. The location is superb and with Hyde Park including the park itself, Marylebone & Paddington with their wide variety of world class amenities all on your doorstep! In addition to this the beautiful Connaught Village is also just a short walk away. The nearest tube & station would be Paddington, which provides a simple commute across the capital and country.

Southwick Street
 Approx. Gross Internal Area 681 Sq Ft - 63.27 Sq M



Ground Floor

For Illustration Purposes Only - Not To Scale

This floor plan should be used as a general outline for guidance only and does not constitute in whole or in part an offer or contract. Any intending purchaser or lessee should satisfy themselves by inspection, searches, enquiries and full survey as to the correctness of each statement. Any areas, measurements or distances quoted are approximate and should not be used to value a property or be the basis of any sale or let.



Energy Efficiency Rating		
	Current	Potential
Very energy efficient - lower running costs		
(92+) A		
(81-91) B		
(69-80) C	74	76
(55-68) D		
(39-54) E		
(21-38) F		
(1-20) G		
Not energy efficient - higher running costs		
England, Scotland & Wales	EU Directive 2002/91/EC	

For clarification, we wish to inform prospective purchasers that we have prepared these sales particulars as a general guide. We have not carried out a detailed survey, nor tested the services, appliances and specific fittings. Room sizes are approximate and rounded: they are taken between internal wall surfaces and therefore include cupboards/shelves, etc. Accordingly, they should not be relied upon for carpets and furnishings. Formal notice is also given that all fixtures and fittings, carpeting, curtains/blinds and kitchen equipment, whether fitted or not, are deemed removable by the vendor unless specifically itemised within these particulars.